



**孕龍科技股份有限公司**  
**Zeroplus Technology Co., Ltd.**

# SPECIFICATION

**MODEL: ST Specification**

**PART NO : 019**

**VERSION : V1.04**

Approver		Check	Design
GM	PM		

Customer Confirm

\* Please fax the file to  
Zeroplus Technology after  
signing .

2F, NO.123, Jian Ba Rd,  
Chung Ho City, Taipei Hsian, R.O.C.

Tel:+886-2-66202225  
Fax:+886-2-22234362



## Content

1	Software Installation .....	3
2	User Interface .....	7
3	Operating Instructions .....	9

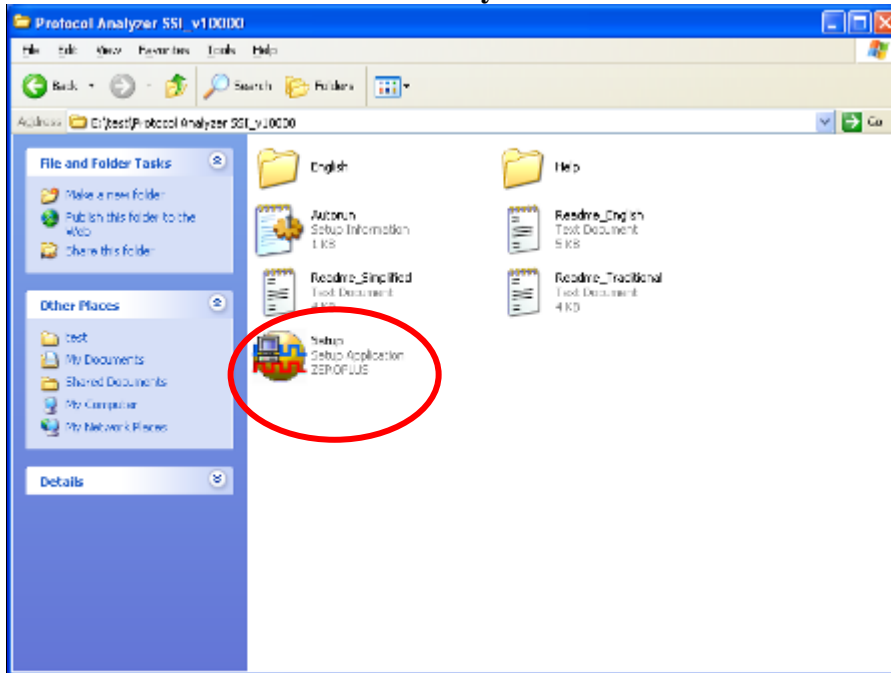


## 1 Software Installation

Please install the software as the following steps:

- ※ Remark: 1. The installation steps for all protocol analyzers are the same; you can complete the installation by following procedures. Following is an example on how to install protocol analyzer SSI.
- ※ Remark: 2. We won't have additional notice for you, when there is any modification of the module specification. If there is some unconformity caused by the module version upgrade, users should take the module software as the standard.

### STEP 1. Install Protocol Analyzer Module.

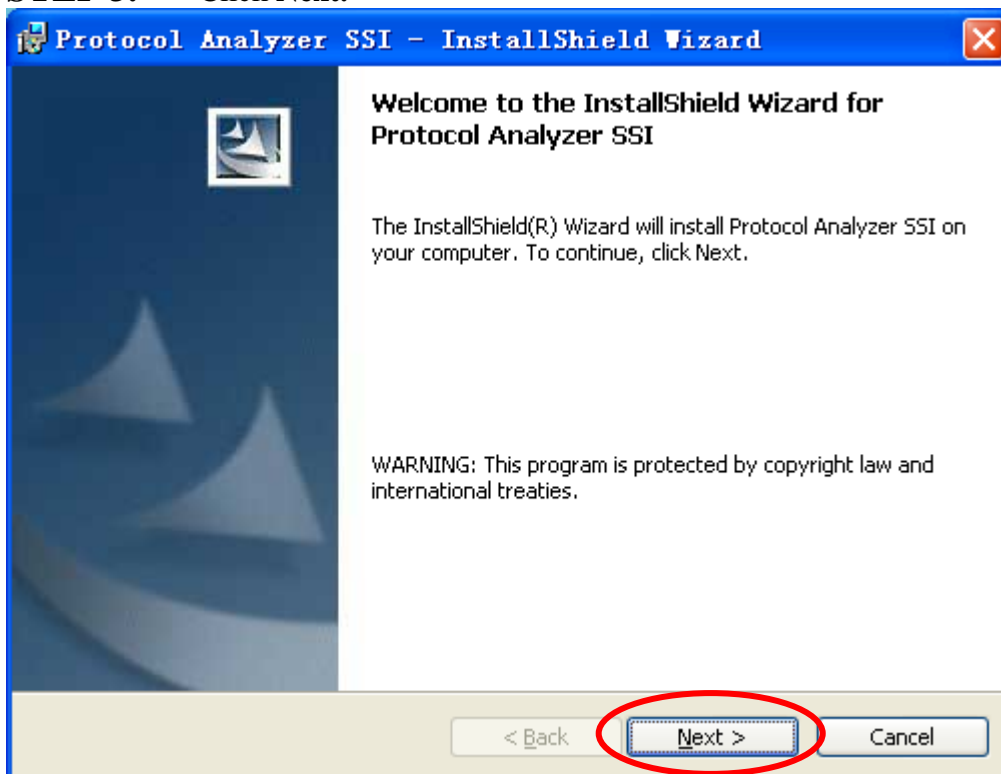


### STEP 2. Click **Install**.

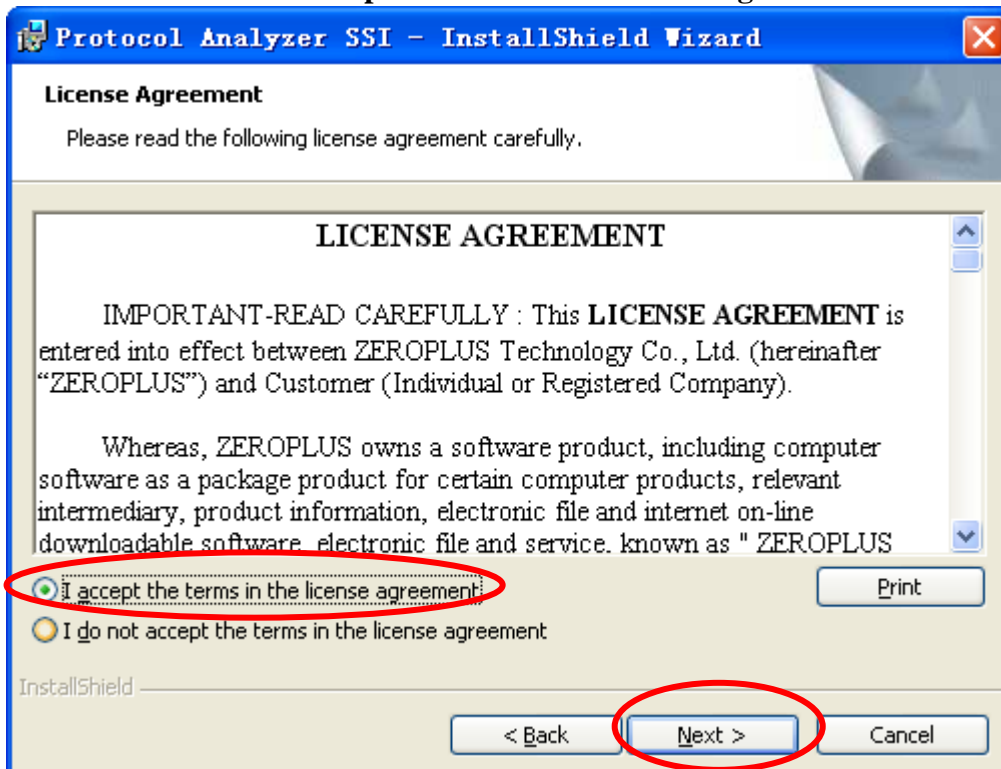




**STEP 3.** Click Next.



**STEP 4.** Select **I accept the terms in the license agreement**, and then press Next.





**STEP 5.** Fill in users' information in the below dialog box and click **Next**.

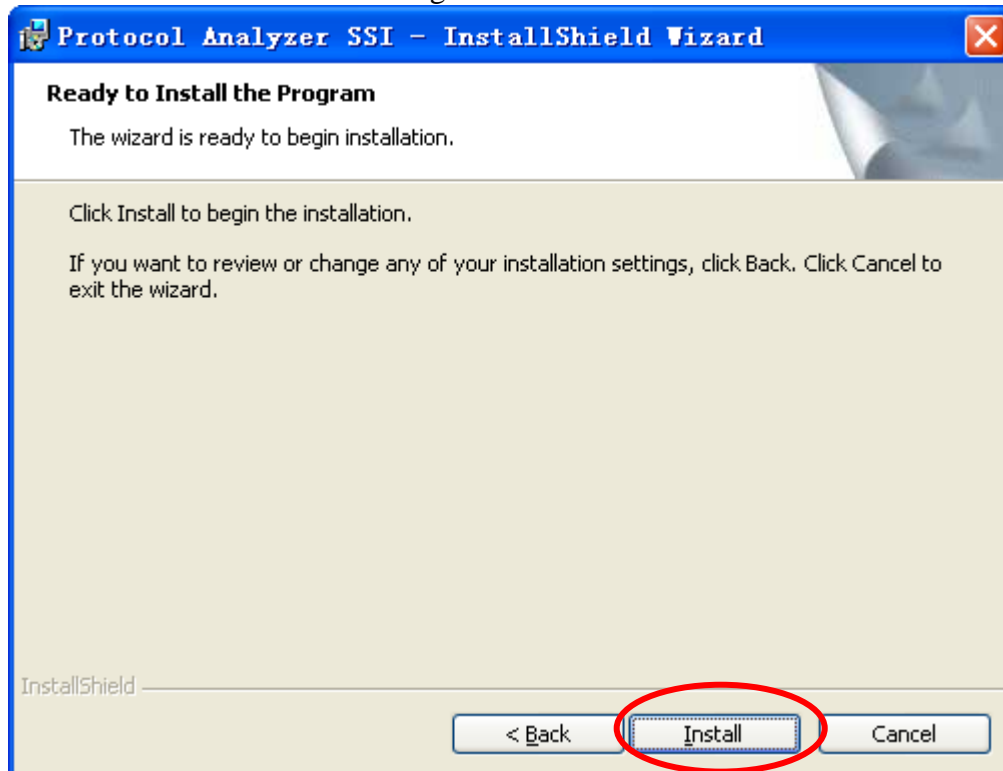
The dialog box is titled "Protocol Analyzer SSI - InstallShield Wizard". It has a "Customer Information" section with the instruction "Please enter your information." Below this, there are two text input fields: "User Name:" with the value "sunshine" and "Organization:" with the value "zeroplus". There is also a section "Install this application for:" with two radio button options: "Anyone who uses this computer (all users)" (which is selected) and "Only for me (sunshine)". At the bottom, there are three buttons: "< Back", "Next >" (which is circled in red), and "Cancel".

**STEP 6.** First, select **Complete** and then click **Next**.

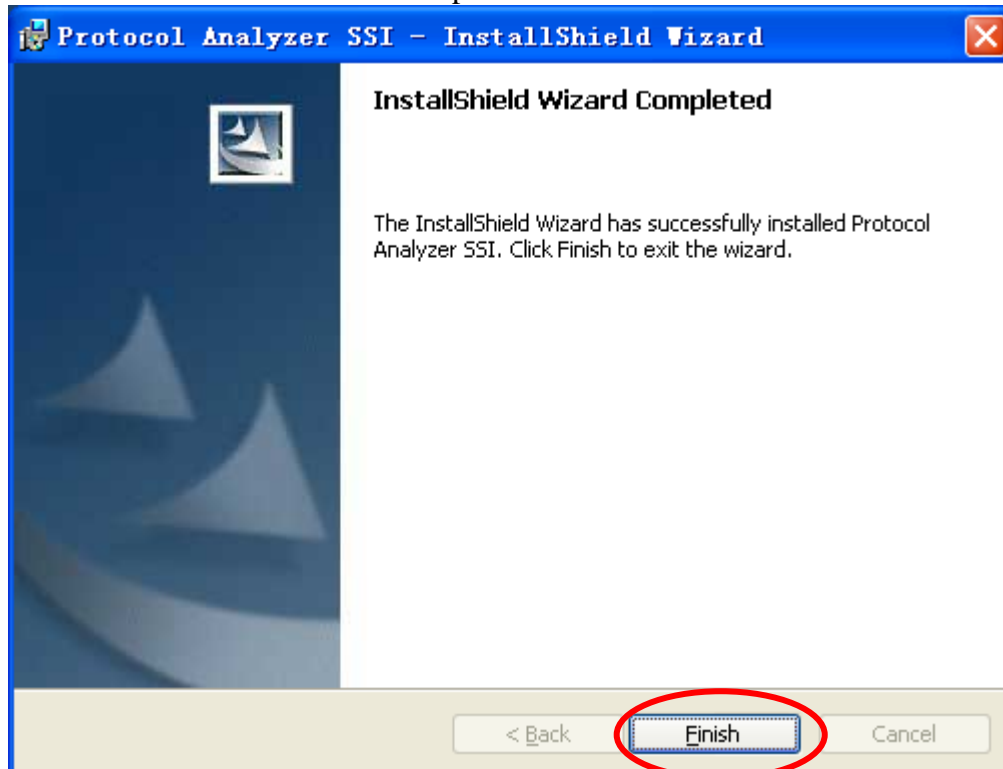
The dialog box is titled "Protocol Analyzer SSI - InstallShield Wizard". It has a "Setup Type" section with the instruction "Choose the setup type that best suits your needs." Below this, there is a text input field with the value "Complete". There are two radio button options: "Complete" (which is selected) and "Custom". The "Complete" option has a description: "All program features will be installed. (Requires the most disk space.)". The "Custom" option has a description: "Choose which program features you want installed and where they will be installed. Recommended for advanced users." At the bottom, there are three buttons: "< Back", "Next >" (which is circled in red), and "Cancel".



**STEP 7.** Click **Install** to begin the installation.



**STEP 8.** Click **Finish** to complete the installation.

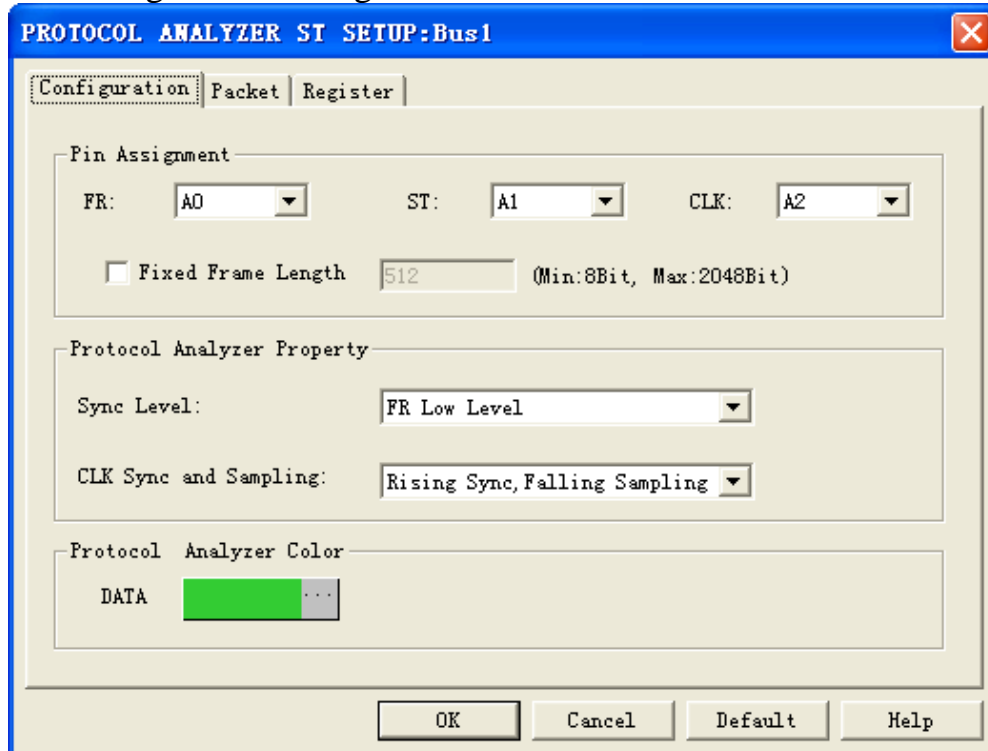




## 2 User Interface

Please refer to the below images to select options of setting **ST Module**.

ST Configuration dialog box



### ST Pin Assignment:

**FR:** The synchronous signal channel is used to determine the starting and ending positions of the package. Its default is A0.

**ST:** ST signal line can decode the protocol analyzer ST and be compatible with the protocol analyzer GCI decoding. The default is A1.

**CLK:** CLK is the frequency signal line. The default is A2.

**Fixed Frame Length:** The default is unselected. When the option is selected, the frame length is limited, when the frame length is set as 512 Bit, every package length is 512 Bits only. The exceed and less frame length will not be decoded. The data is displayed with 8 bits as a group.

### Sync Level:

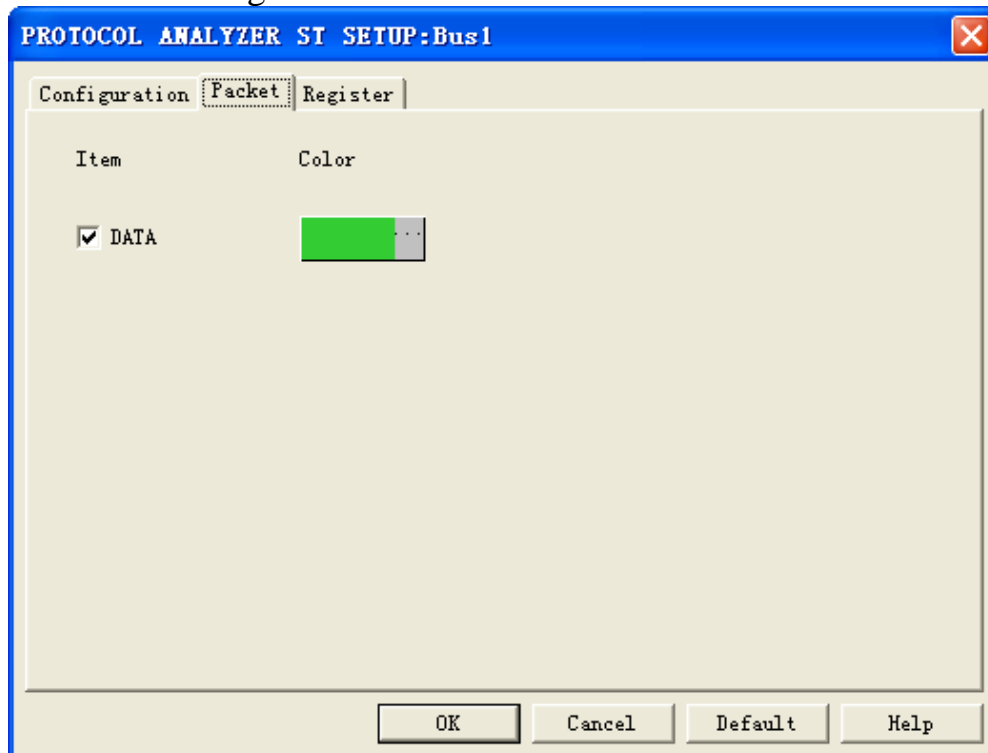
The options are FR Low Level and FR High Level. The default is FR Low Level.

### CLK Sync and Sampling:

**Rising Sync, Falling Sampling** and **Falling Sync, Rising Sampling** are listed. The default is **Rising Sync, Falling Sampling**.

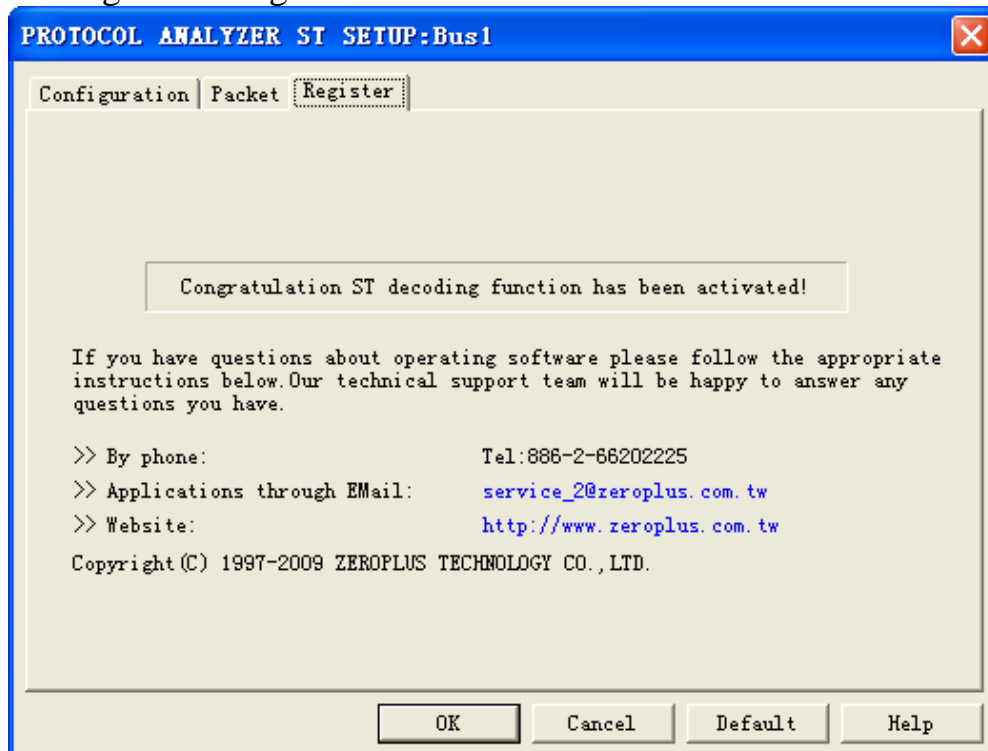


### ST Packet dialog box



In the packet dialog box, the displayed items and the color configuration can be selected.

### ST Register dialog box



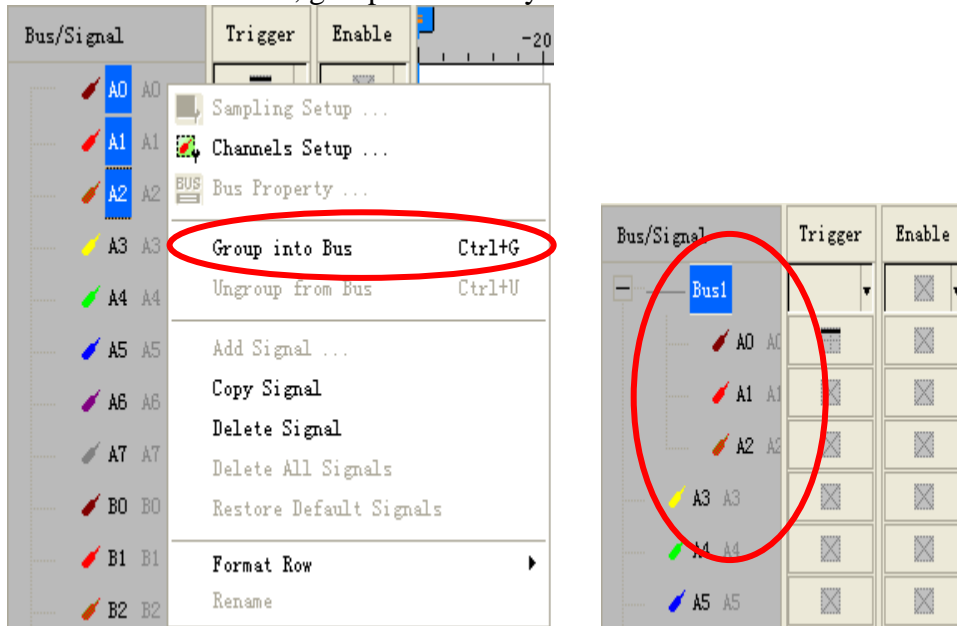
There is ZeroPlus company information written. If users have questions about software operations, they can contact ZeroPlus by Telephone or Email.



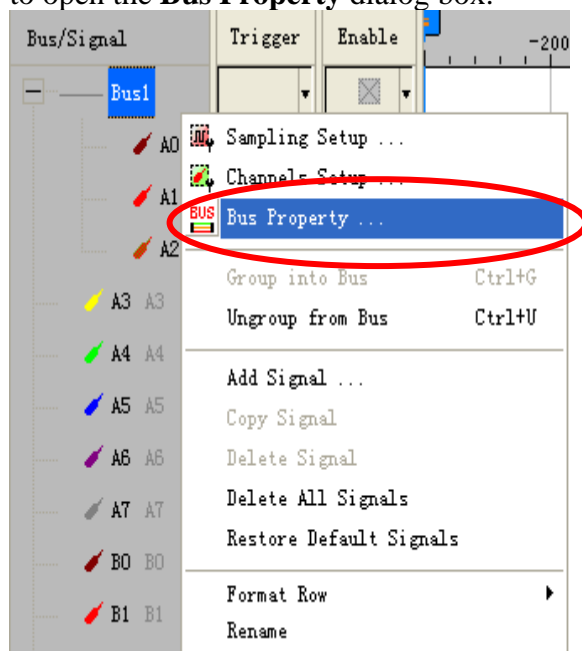


### 3 Operating Instructions

**STEP 1.** At first, group the unanalyzed channels into **Bus 1**.

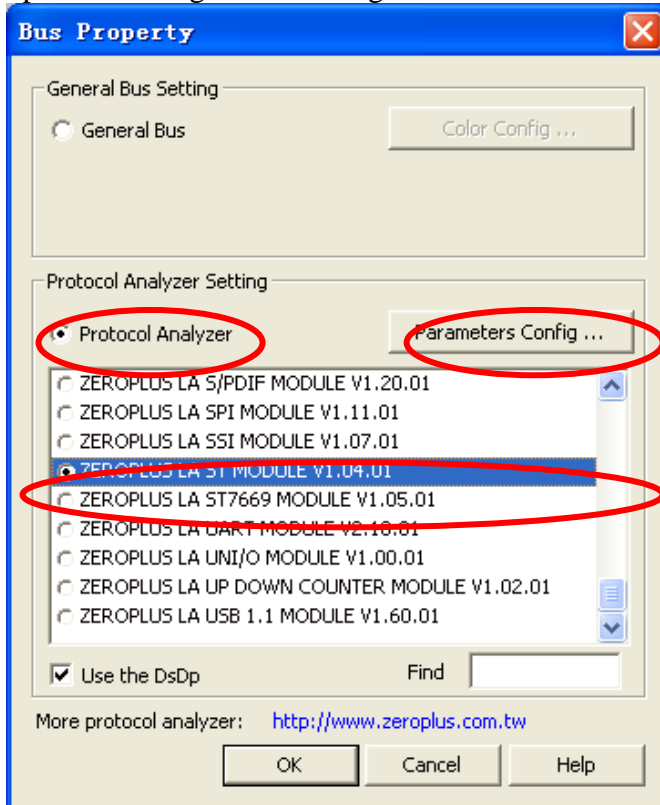


**STEP 2.** Select **Bus1**, then press **right** key on the mouse to list menu. Click **Bus Property** to open the **Bus Property** dialog box.

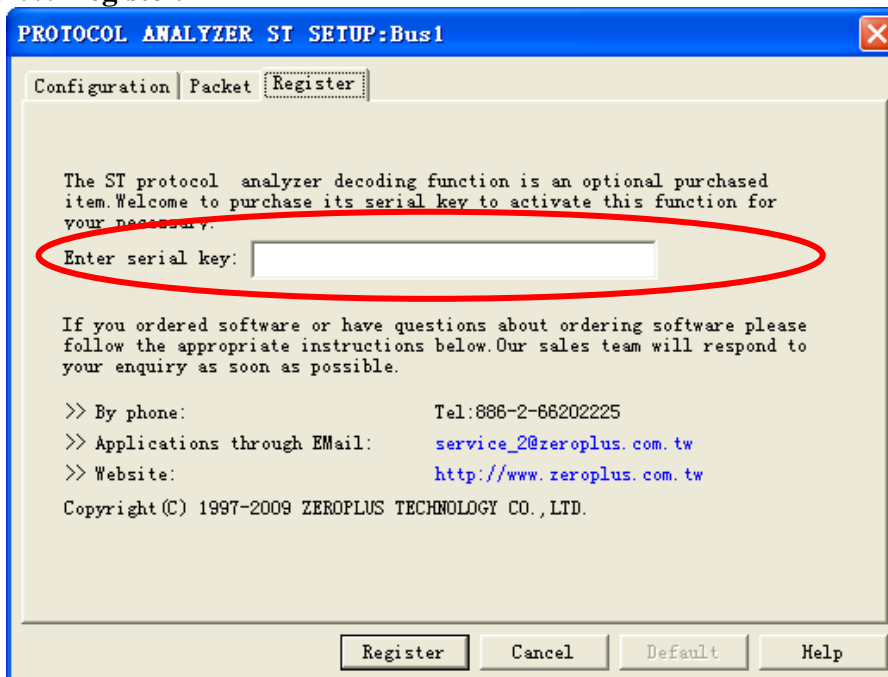




**STEP 3.** For Protocol Analyzer ST Parameters Configuration, select Protocol Analyzer, then choose **ZEROPLUS LA ST MODULE V1.04.01**. Next, click **Parameters Configuration** to open the configuration dialog box.

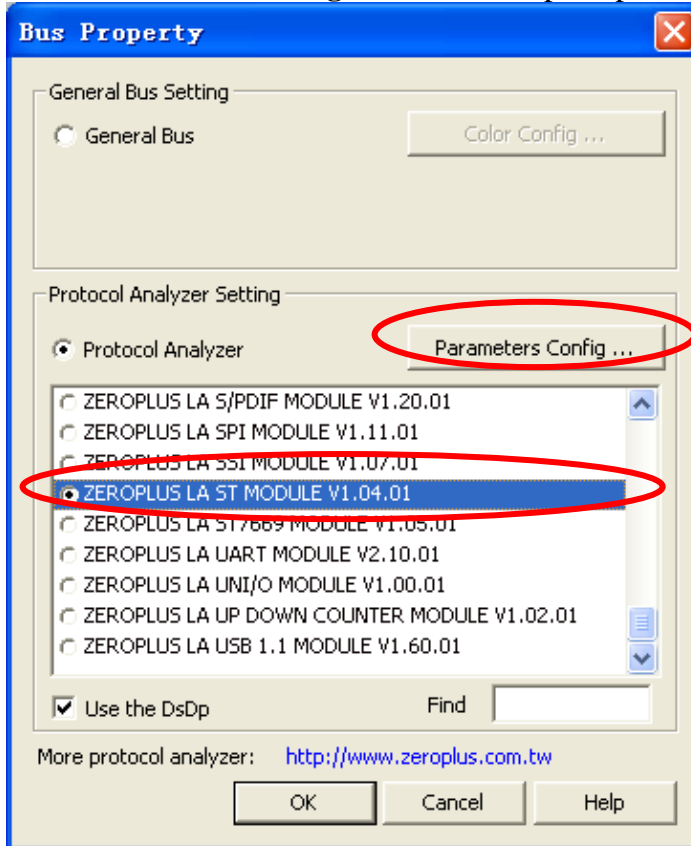


**STEP 4.** Press Register tab to type the serial key number of ST Protocol Analyzer. Then, press **Register**.

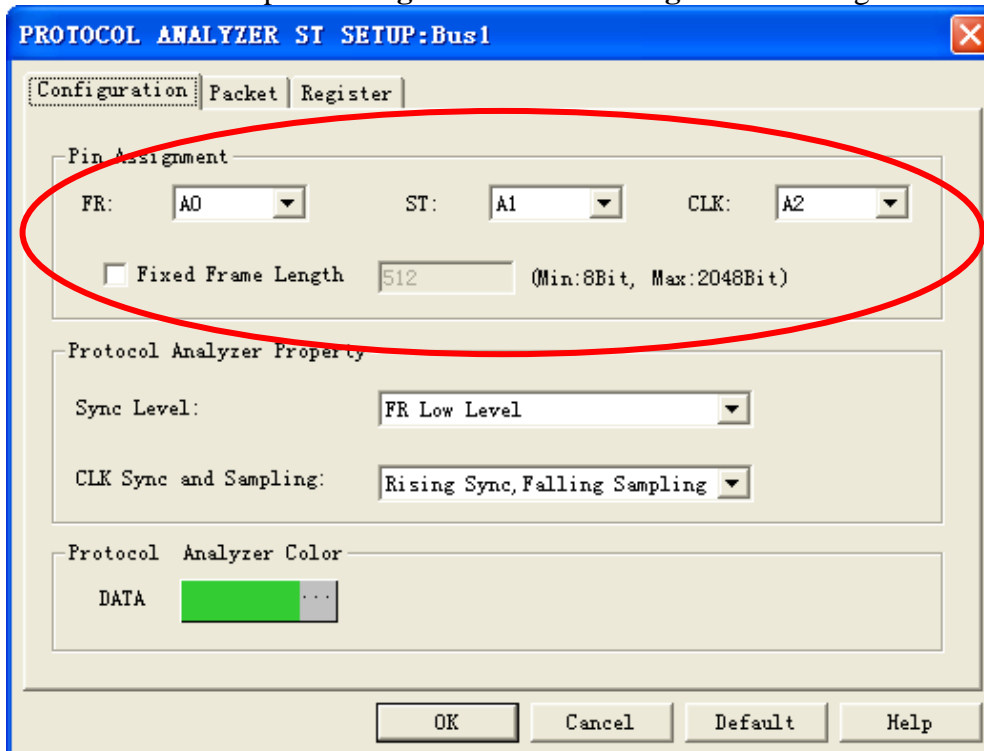




**STEP 5.** After pressing **OK** on Register dialog box, it turns to **Bus Property** dialog box. Click **Parameters Configuration** to set up the parameter of the protocol analyzer ST.

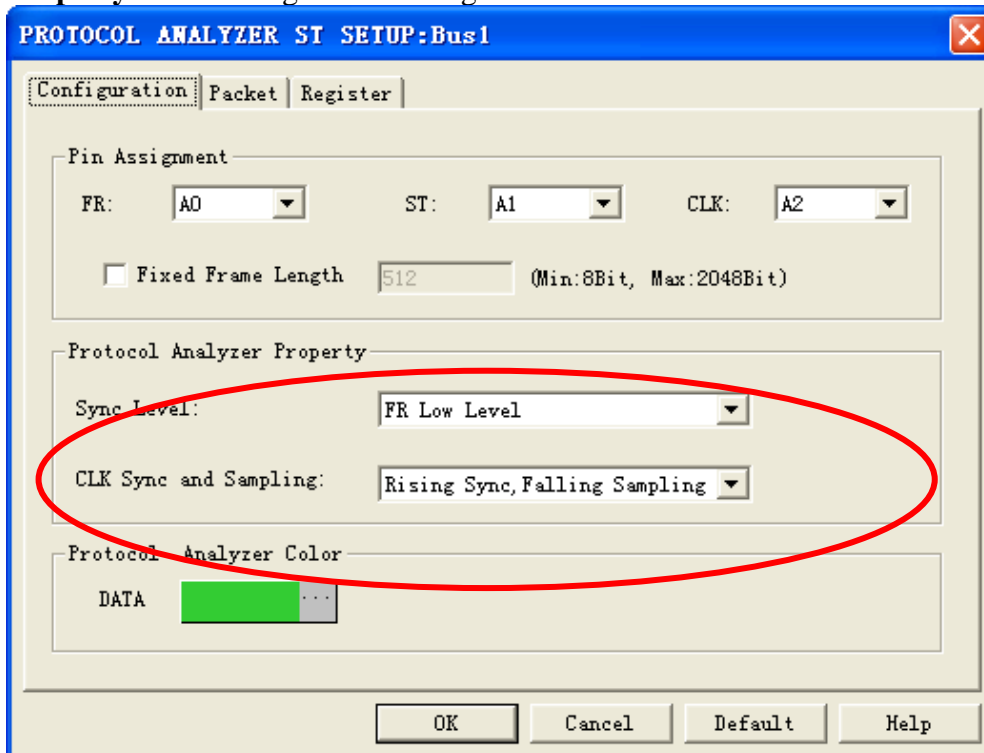


**STEP 6.** Set up **Pin Assignment** in the **Configuration** dialog box.



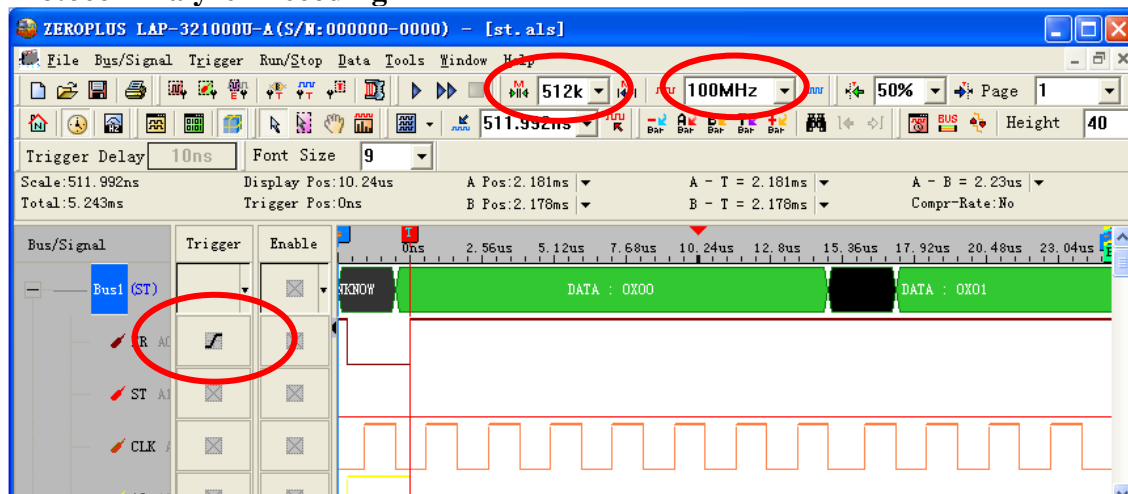


**STEP 7.** Set up Sync Level and CLK Sync and Sampling for Protocol Analyzer Property in the configuration dialog box.



**STEP 8.** Following pictures show the completion of the protocol analyzer decoding and the packet list. The Trigger condition is set as Rising Edge; the Memory depth is 512K; the Sampling frequency is 100MHz.

### Protocol Analyzer Decoding





## Packet List

